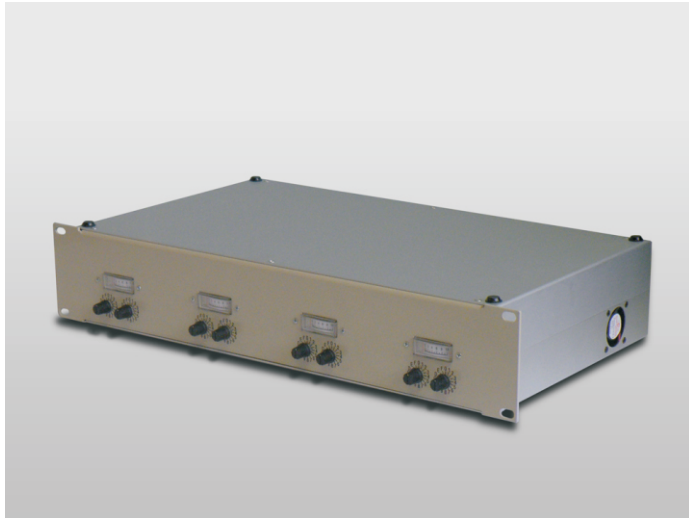


4 Channel COFDM Base Station Receiver

Product Information



COFDM RF Input	8 SMA Connector
Input Frequency	L-Band, S-Band, C-Band
Dimensions	W483mm x D90mm x H300mm
Weight	1.6Kgs
Power Supply	2.5Amp @ 12VDC
Power Connection	LEMO 2 Pin Plastic
RF output	N Type x 1
RF Connector	SMA x 8
Channel Selector	16 Way Rotary Switch (x8)
Antenna Options	Standard Omni Antenna High Gain Omni Antenna High Gain Directional Grids Yagi Antenna Sector Antenna Mobile Antenna Sets
Model	Input Frequency Range
RTx L COFDM ****	1.2 – 1.45 GHz
RTx451 COFDM ****	2.3 – 2.5 GHz
RTx4 C1 COFDM ****	4.9 – 5.3 GHz
RTx4 C2 COFDM ****	5.3 – 5.7 GHz
RTx4 C3 COFDM ****	5.725 – 5.875 GHz
RF Output Frequency	5 – 6GHz

- 19" rack mounting
- Four independent diversity receivers
- Available with JPEG2000, MPEG4 or H.264 decoders
- Four composite video outputs
- Four independent channel selectors
- 8MHz, 4MHz, 2MHz, 1MHz – Bandwidth options
- Full D1 Resolution
- COFDM lock indicators
- Low latency
- Up to -105dBm sensitivity